

GABEL'S CHARME

In the *Charmé* are incorporated all the features that the operator desires in an automatic phonograph, namely, illuminated *Programatic Dial*, lighted program holder, Neon sign "Music by Gabel," readily-opened front glass panel, synchronized amplification producing 45 watt output and 5-10-25c coin slot. Above all, a positive selective mechanism that patrons can easily choose and arrange, in advance, a selection of 18 ten-inch records, without doubt or confusion.

GABEL'S LORELEI

In the *Lorelei* have been blended the experience and art of Gabel's 35 progressive, successful years in this highly specialized manufacturing field, occupying the position of pioneer and leader in the automatic phonograph industry.

The 24 record feature has long been the talking point for operators desiring special locations that help materially in increasing their earnings. The *Lorelei* also has the Neon sign "Music by Gabel", lighted program holders, readily-opened front glass panel, synchronized amplification producing 45 watt output, and 5-10-25c coin slot. This machine does not have the Multi-Selective feature but records can be selected individually or automatically in rotation.

GABEL'S ELITE

This machine has proven its worth time and again for its simplicity, durability and effectiveness in mechanical operation. Its mechanism is constructed from the best of materials money can buy. Every operator, who operates automatic phonographs for dependable profit, can easily rely upon its long performance in acquiring a regular return on his investment.

The same features are incorporated in the *Elite* as are found in the *Charmé*. This model plays 12 ten-inch records.

THE JOHN GABEL MFG. CO.

1200 W. Lake Street Chicago

SALES AGENTS

PACIFIC COAST STATES

ROBERT LLOYD
2211 San Antonio Ave., Alameda, Calif.
4505 So. Vermont Ave., Los Angeles, Calif.

TEXAS

LESTER HEARN
2222 Freeman St., Houston Texas

ARIZONA AND NEW MEXICO

J. B. RHODES
1510 N. Central St., Phoenix, Ariz.

METROPOLITAN NEW YORK

ROBERT GRENNER
250 West 54th Street, New York City

ATLANTIC COAST STATES

H. R. COLLARD
2429 18th St. N. W., Washington, D. C.

WESTERN PENNSYLVANIA

N. McDONALD
2334 Fifth Ave., Pittsburgh, Pa.

MILWAUKEE, WISCONSIN

THE MILWAUKEE MUSIC CO.
2313 W. Fond du Lac Ave., Milwaukee

OHIO, KENTUCKY, TENNESSEE, GEORGIA

ALLAN K. ROMER
205 So. Fourth St., Louisville, Ky.

NEVADA

EDWARD R. PETERSON
127 Cheney St., Reno, Nev.

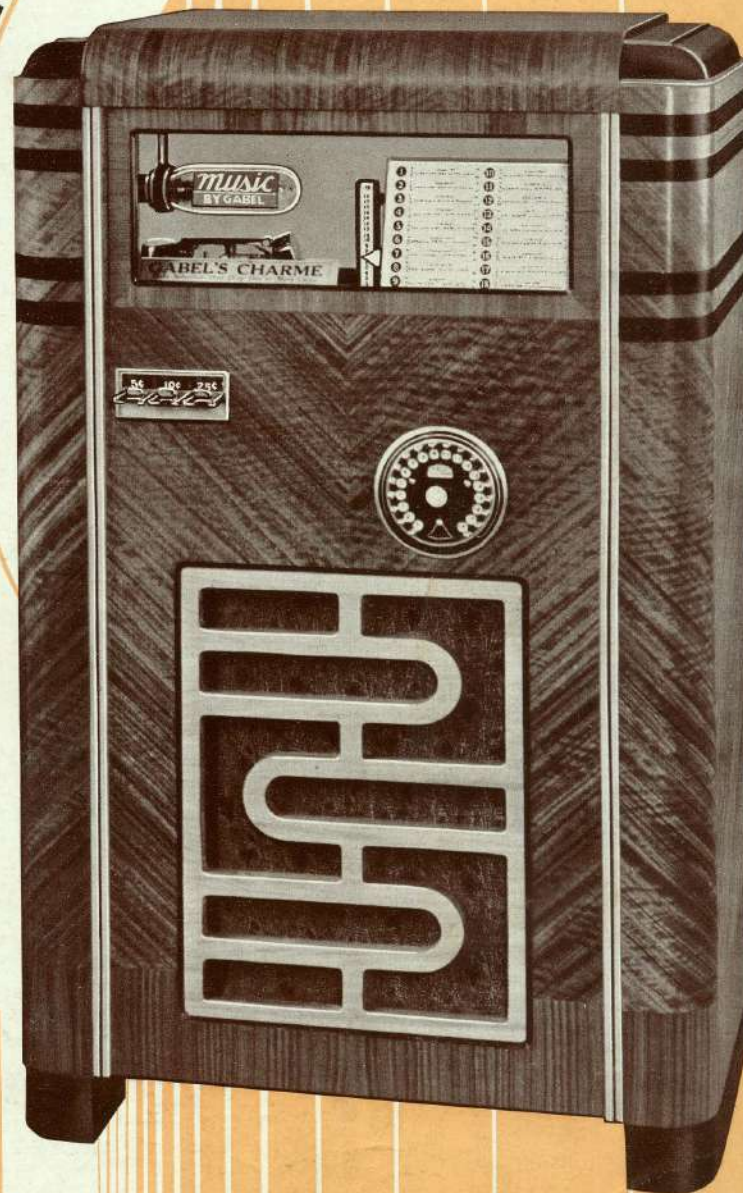
GABEL'S

CHARME

The *Charmé*, a most attractive model, is a perfect synchronization of Walnut woods combined with Maple set off with Prima Vira finish. The outstanding beauty of the *Charmé* beams with delight and satisfaction wherever displayed. Specifications — Height 52", Width 32", Depth 18½".

18

Records





LORELEI

24 Records

For those who desire a larger automatic phonograph, together with beautiful lines and matched woodwork, select this model — the *Lorelei*. Combination finishes such as Oriental Walnut, Birds-eye Maple and American Ribbon Walnut make the cabinet stand out in a class by itself.

Specifications: Height, 49½", width, 37½"; depth, 21½".

G A B E L ' S



ELITE

This attractive cabinet is an expression in modernistic design. Carefully selected and beautifully finished panels of Oriental Walnut, Prima-Vera, Zebra Wood, American Ribbon Walnut and Ebony trim. This harmony imparts to the *Elite* the appearance of being perfectly costumed and groomed. It has pleasing individuality.

Specifications: Height, 49½"; width, 30"; depth, 18½".

12 Records