

the Wurlitzer

2800

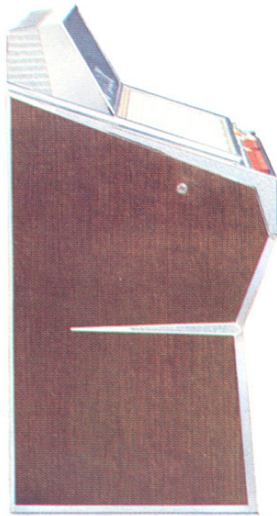



Makes the swing to higher earnings



the **Wurlitzer** **2800**

Available in 200 or 100 Selection Models



NEW JET AGE STYLING



NEW SIMPLIFIED SERVICING



NEW HIGHER EARNING POWER

The Wurlitzer 2800, the best looking, best sounding phonograph we have ever built, is the latest product of a Wurlitzer policy deliberately established with the operator's interest in mind.

While brilliantly styled in step with the jet age, and incorporating many refinements and improvements over its predecessors, there are no changes just for change sake . . . no radical restyling aimed at depreciating the value of recent Wurlitzer models.

The Wurlitzer 2800 is a superb phonograph. Ingeniously designed to minimize service costs, it has more to offer the location owner, with an array of advanced features that makes it a favorite with patrons.

No words can adequately portray its beauty or define its ear pleasing stereophonic sound. Once you have seen and heard this splendid phonograph you will appreciate what Wurlitzer has done to make the Model 2800 a milestone in the history of instruments expressly created to make the swing to higher earnings.





Model 2800
200 Selections



Wurlitzer

The Only Phonograph Offering
the Extra Earning Power
of the

TEN TOP TUNES FEATURE

Plus

LP ALBUM SELECTIONS

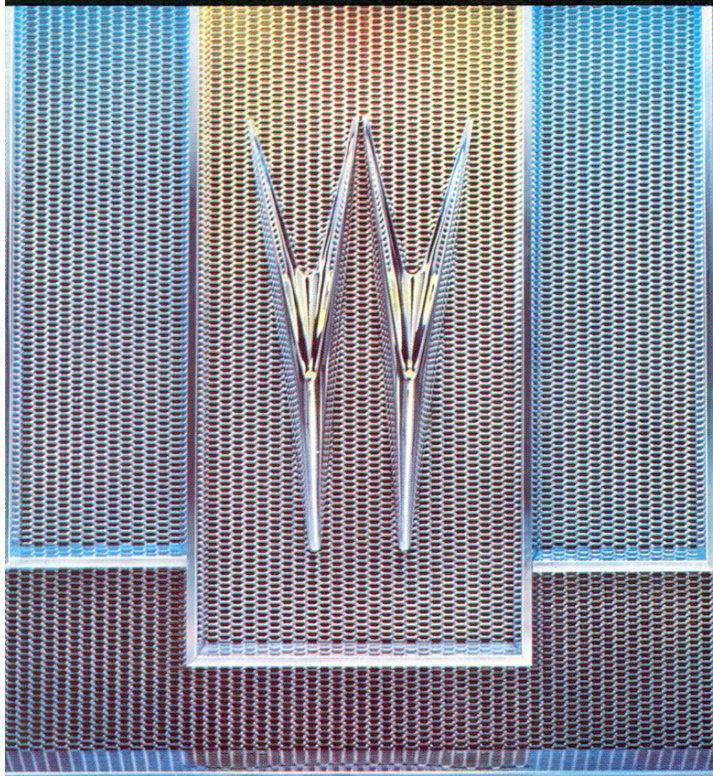
With a Wurlitzer Model 2800 you've got everything working for you that will turn music into money. A name that **means** music to millions. Jet age styling . . . a mechanism long recognized for its service-free performance . . . plus the greatest extra coin-coaxing features in juke box history — Ten Top Tunes for Fifty Cents — with the versatility that makes it possible to play pre-selected album tunes from the top LP's. Or, should you prefer to program little LP's with three tunes per side, this optional feature is available.



Features



NEW SPRING-LOADED DOME — Unlock the dome and it lifts automatically to finger hold clearance. Raise to latch position with almost effortless action. It can't drop even if a spring should fail. As dome is opened, the title strip holder can be dropped into loaded position and is held firmly in place while strips are changed. Programming, record changing, needle replacement and tone arm adjustments are all quickly performed. Dome closes with the same hydraulic-like cushion action.



NEW COLORFUL GRILLE — Pastel lighted grille gleams with chrome finish. Die-cast "W" in tripanel framing conceals skillfully created sounding board.



HUNDRED SELECTION DOME STYLING — This aero-styled silhouette of the Model 2810 one-hundred selection phonograph vividly depicts the complete die-cast frame which surrounds the program holder and the top display panel. This design, standard on both models, is accentuated by the Kashmir Walnut color of the grained Dinoweld side.

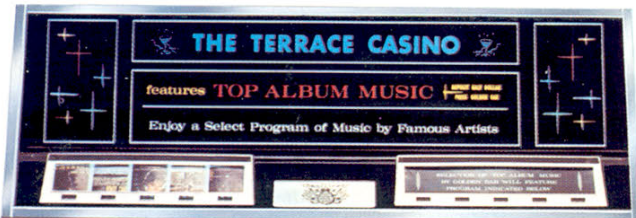


Features

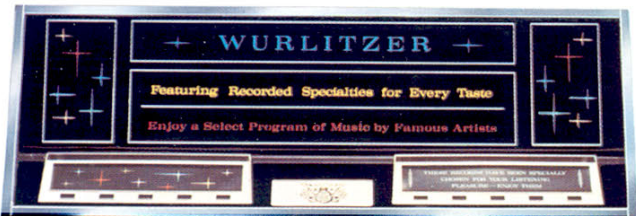
Only Wurlitzer Has This Variety in Play-Promoting Dome Displays



The Famous Ten Top Tunes



Adult Listening from Top Album Music



A Program of Record Specialties for Every Taste



Little LP's with Three Tunes on Each Side

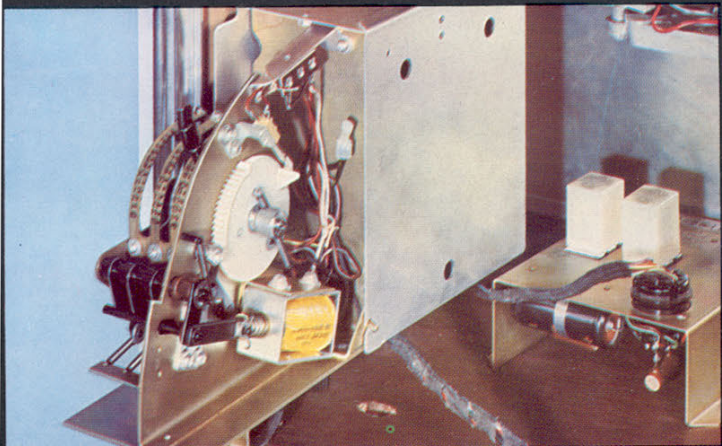
Backlighted Miniature LP Album Covers



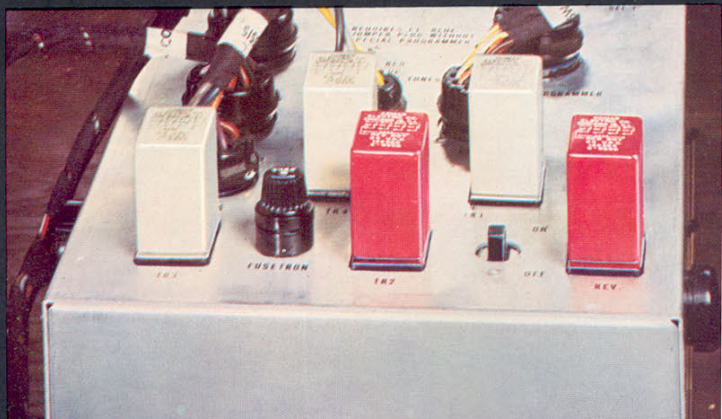
Display cases for miniature covers of programmed album tunes. If phonograph is not set up to play LP Album Picks, these cases carry appropriate play-promoting messages.



NEW STEREO PROMOTION PANEL — The words "Wurlitzer Stereo" on a three-dimensional glass panel call attention to the fine tonal qualities which patrons have come to associate with Wurlitzer.

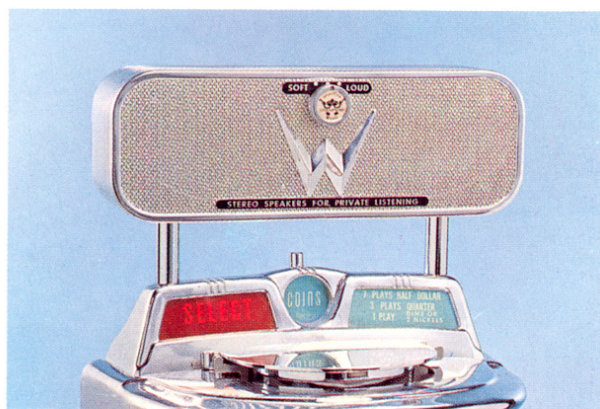


NEW IMPROVED PLAYRAK — The Wurlitzer 2800 incorporates an advanced version of the famed Playrak that accepts nickels, dimes, quarters and halves. It can be pre-set to offer from one to fifteen plays per coin.



RELAYS MOUNTED ON CONTROL CENTER — The Wurlitzer 2800 introduces a convenient relay control center on the junction box which contains the selector circuitry and is controlled by five plug-in relays. These relays can now be checked as you would check vacuum tubes — a feature that saves time, speeds service and eliminates a goodly percentage of costly call-backs.

Every Unit of Wurlitzer Remote Equipment is a Proven Contributor to Higher Operator Earnings



PRIVATE STEREO SPEAKER MODEL 5121

Pipes personalized music direct to patrons seated in booths, at counters or bars. Features volume control, twin 5" stereo speakers and slot loaded cavity to enhance low frequency response.

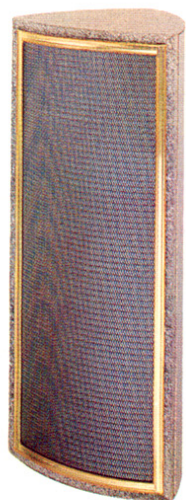


STEREO EXTENDER MODEL 5125

New wraparound grille in antique bronze finish features brass-plated zinc "W" and script "Stereo," brass moldings. Neutral finish top and bottom. A 6" x 9" oval speaker is set in a 20° fixed baffle. Treble and middle sound ranges extend stereo sound through location. Sold in pairs. DIMENSIONS: 12" High, 14" Wide, 8" Deep.

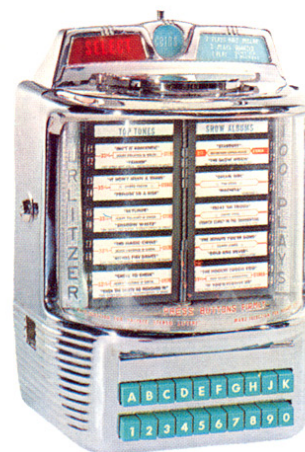
STEREO DIRECTIONAL SPEAKER MODEL 5126

Uniquely designed to fill a variety of requirements. May be mounted on wall or in corner vertically or horizontally. Can be rotated 180°. Bronze metal grille, sturdy metal case. Neutral finish. Houses 6" x 9" speaker. Has fader control and matching transformer. Mounting brackets furnished. Packaged in pairs. DIMENSIONS: 22½" High, 9¼" Wide, 8" Deep.



HALF-DOLLAR SINGLE COIN WALL BOX MODEL 5010

The already fantastic play-stimulating power of the Wurlitzer Ten Top Tunes feature gets an added boost from these wonderful little wall boxes. Only 6" wide, 9" high and 2¾" deep, they fit on bars, counters or in booths. Patron doesn't have to move from his seat to enjoy the programmed top tunes at the drop of a half-dollar coin. Deluxe chromed bracket permits eye-appealing installation, features Wurlitzer Crest with see-deep effect. Bracket also available in aluminum finish.



WALL BOX MODEL 5200-5250

Accepts all coins including half-dollars. Has credit indicator and coded key. Top-operated program pages and title strips illuminated top and bottom. Chromed die-cast case. Available as Model 5250 (200 selections) and Model 5200 (100 selections). DIMENSIONS: 15¼" High, 11" Wide, 8" Deep.

BASIC PHONOGRAPH SPECIFICATIONS—MODELS 2800-2810

SIZE: Height 52½" Width 33¾" Depth 27½"

RECORD CHANGERS

Model 2800	Model 2810
200 Selections	100 Selections
from 100	from 50
33 and 45	33 and 45
seven-in. records	seven-in. records

SPEAKERS

Two 12-inch, one heavy duty and one mid-range. One 6-inch tweeter. Both models equipped with multipurpose sonotone pick-up with dual 7/10 mil. sapphire stylus. WATTAGE: Complete 325 Standby 125 Maximum with auxiliary equipment 460

SOUND SYSTEM AMPLIFIER

Slide switch converts from monophonic to stereophonic sound system. Each amplifier contains automatic, two-channel, level control. Four-step, bass and treble controls for each channel. Balance control and manual loudness control.

WEIGHTS

Model 2800	Model 2810
Uncrated 355 lbs.	Uncrated 340 lbs.
Crated 403 lbs.	Crated 386 lbs.



THE WURLITZER COMPANY

NORTH TONAWANDA, NEW YORK

108 Years of Musical Experience